

COVID-19 Screening Decision Tree

Student or staff member complains of COVID-19 or MIS-C symptoms.

Call 9-1-1 (EMS) if any the following symptoms are exhibited

- +Difficulty or Rapid Breathing
- +Pulse O₂ <92%
- +Bluish Lips/Face
- +Chest Pain
- +New Confusion
- +Unable to wake or stay awake

NO

Mask student or staff member

Place student in isolation area away from others



Staff should go home immediately and consult a healthcare provider.

Questions to ask:

1. When did symptoms appear?
2. Recent COVID-19 exposure?
3. Signs and Symptoms (*see list on back*)
4. Temp > 100.4 or school board policy if lower
5. +Pulse O₂ <92%

NO

Allow to rest for 10 minutes

Improving? NO

YES

Back to Class

YES

- +Isolate
- +Send home ASAP
- +Contact Medical Provider
- +Contact Public Health

FOLLOW-UP WITH

- +Student/family
- +Health Services
- +Administrator



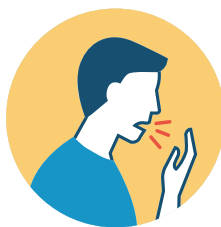
Symptoms of COVID-19



CONGESTION
OR RUNNY NOSE



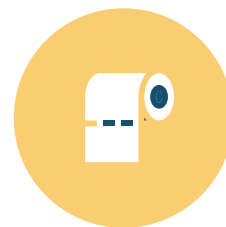
FEVER 100.4*
*or school board policy
if threshold is lower



COUGH



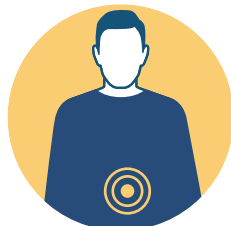
SHORTNESS OF BREATH OR
DIFFICULTY BREATHING



DIARRHEA



HEADACHE



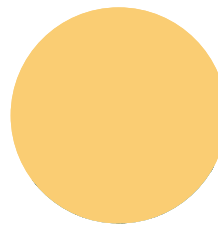
NAUSEA
OR VOMITING



SORE THROAT



MUSCLE PAIN
AND FATIGUE



CHILLS



NEW LOSS OF TASTE
OR SMELL

**Usually presents with more than one symptom.*

Look for emergency warning signs* for COVID-19. If someone is showing any of these signs, seek emergency medical care immediately

***Difficulty or rapid breathing**

***Persistent pain or pressure in the chest**

***New confusion**

***Inability to wake or stay awake**

***Bluish lips or face**

***Stomach Pain**

**This list is not all possible symptoms. Please call your medical provider for any other symptoms that are severe or concerning to you.*

**Call 911 or call ahead to your local emergency facility:
Notify the operator that you are seeking care for someone who has
or may have COVID-19.**

Symptoms of MIS-C

***Rash**

***Red Eyes**

***Cracked/Swollen Lips**

***Red/Swollen Tongue**

***Swelling Hands/Feet**

***Stomach Pain**

